

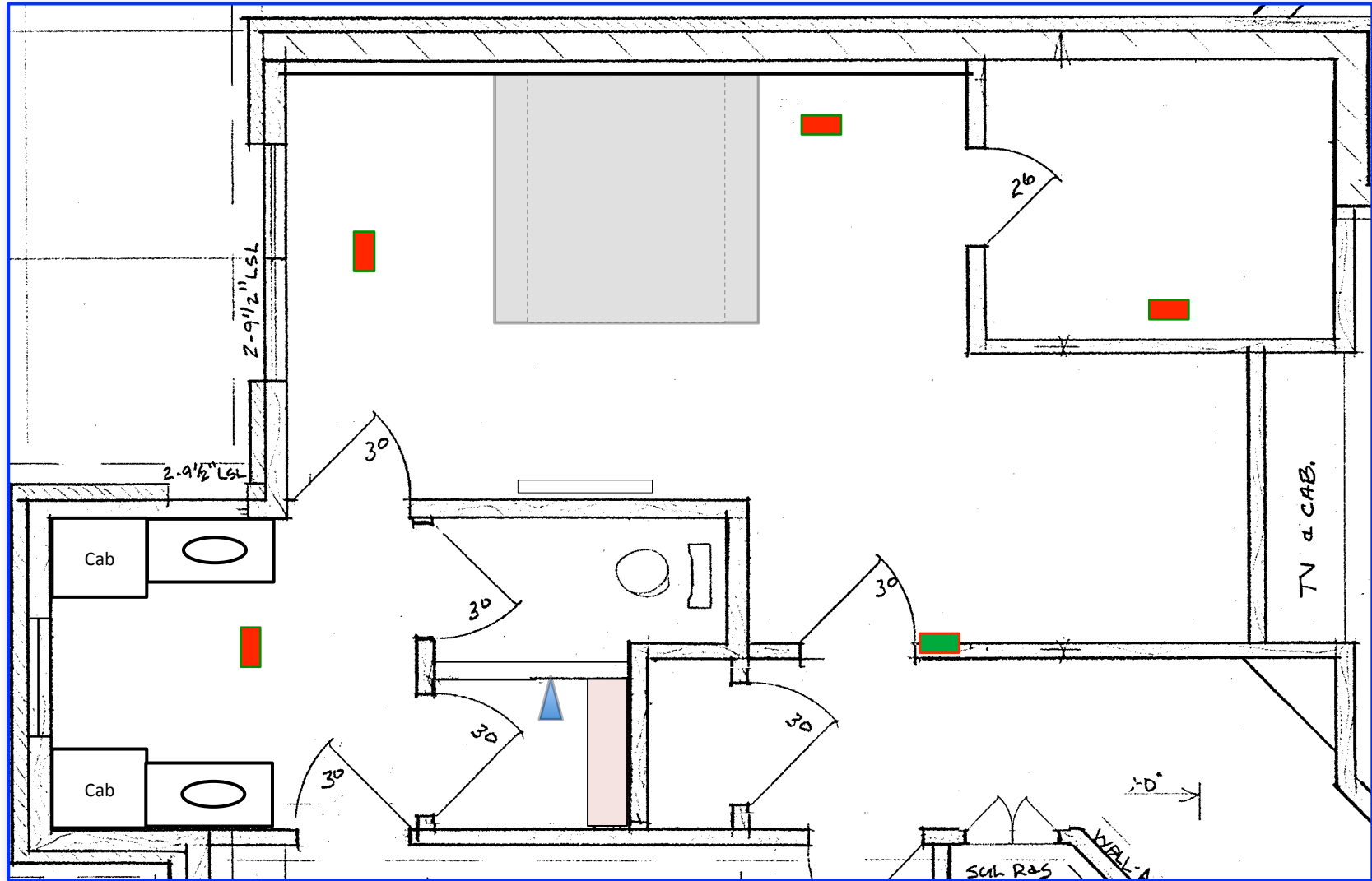
Floor Plan Detail

Shower Valve



Horiz Grab Bar
2' Length

Permanent Bench
12\"/>

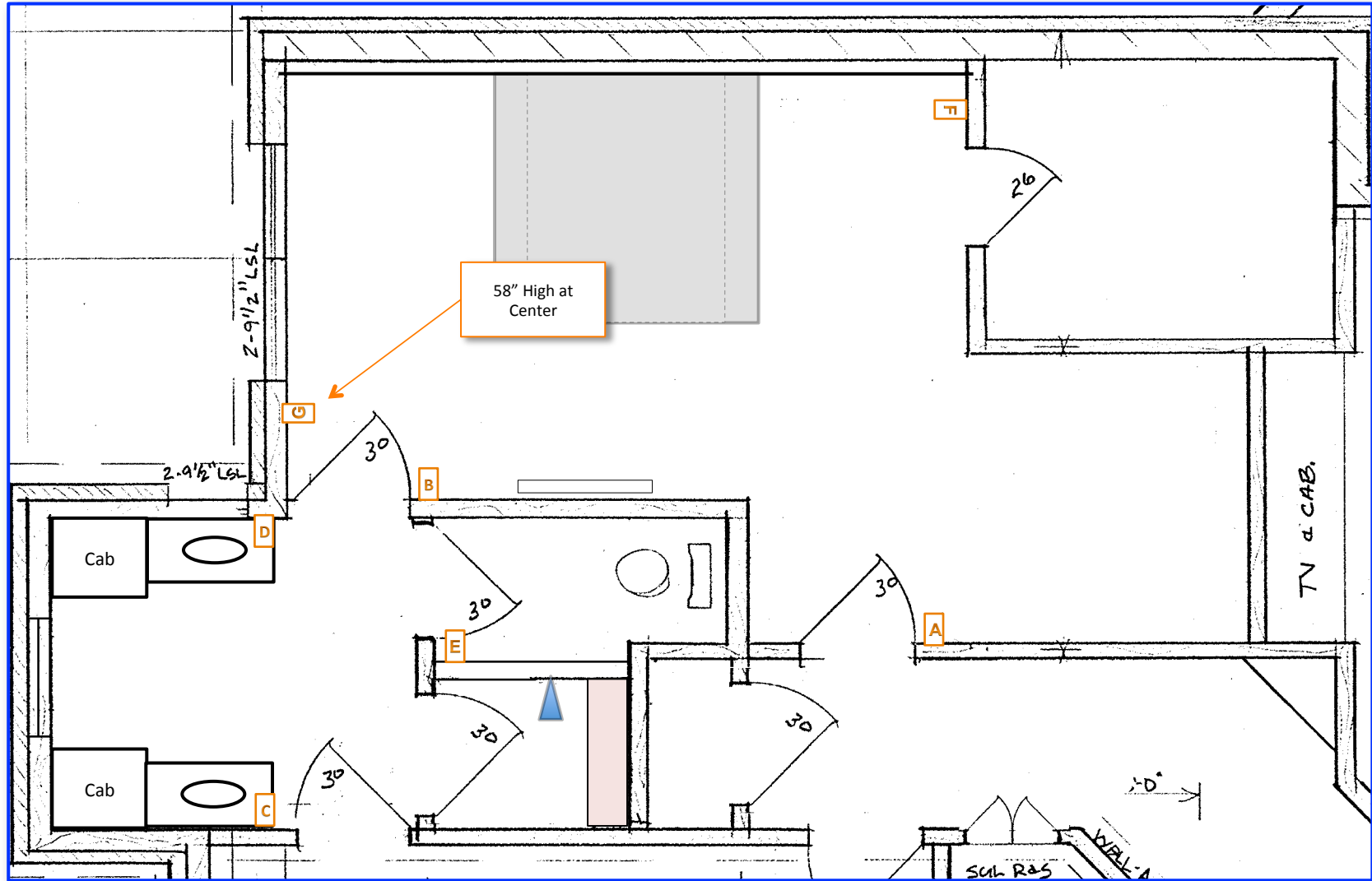
Scale: 4' per inch



HVAC Duct Locations

-  = Supply Air Duct
-  = Return Air Duct

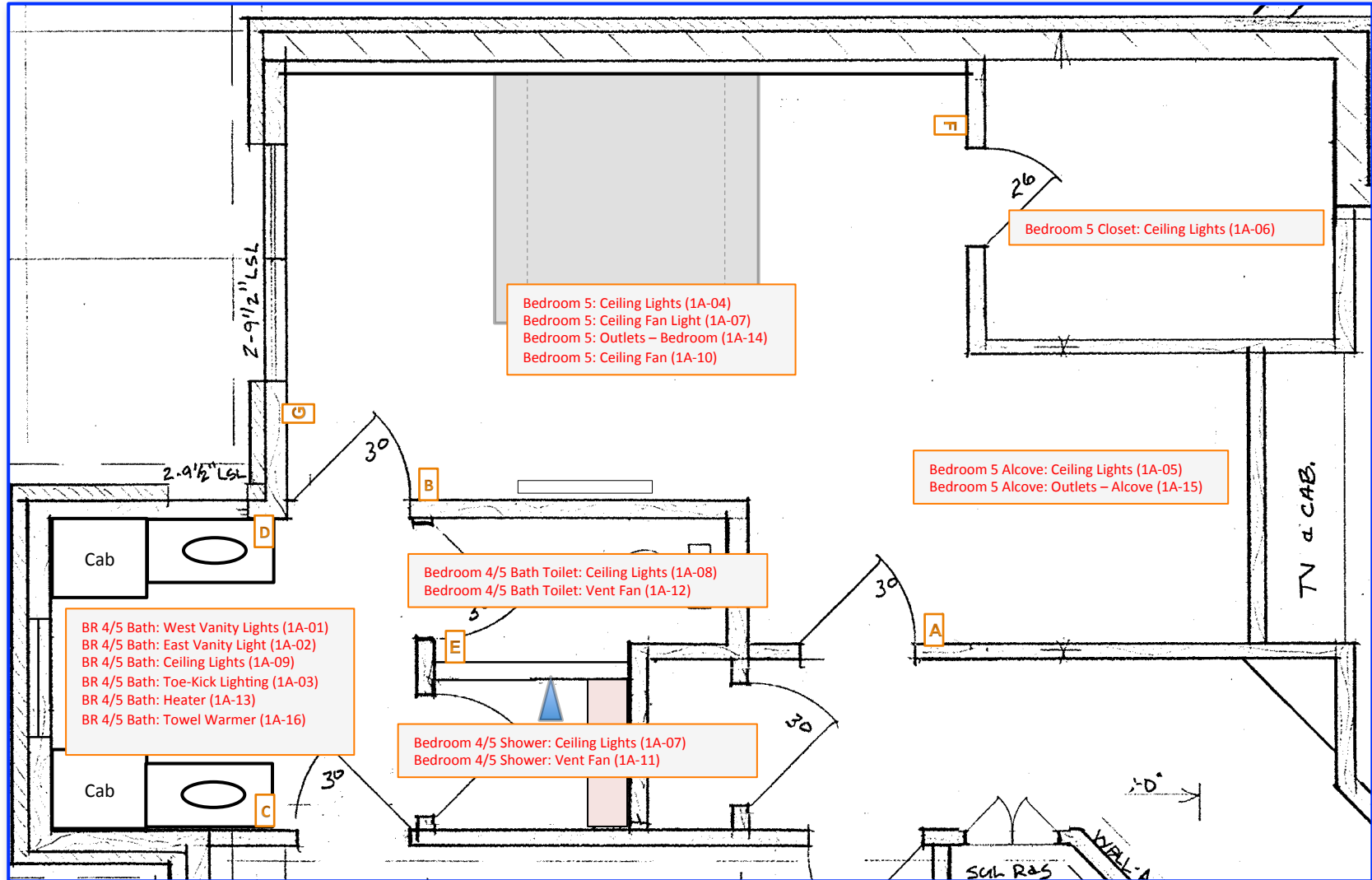
Scale: 4' per inch



Lighting Controls

X = Switch Cluster

Scale: 4' per inch



Lighting Circuits

X = Switch Cluster

Scale: 4' per inch

1A - Bedroom 5 & Bath

Lighting Keypads 1

Keypad Location 1A-A

Bedroom 5, Left of Hall Door



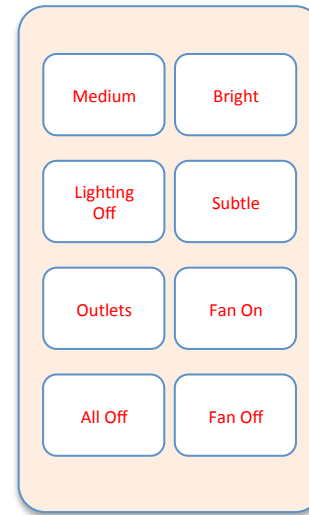
Bedroom 5: Ceiling Lights (1A-04)
 Bedroom 5: Ceiling Fan Light (1A-07)
 Bedroom 5: Outlets – Bedroom (1A-14)
 Bedroom 5: Ceiling Fan (1A-10)

Bedroom 5 Alcove: Ceiling Lights (1A-05)
 Bedroom 5 Alcove: Outlets – Alcove (1A-15)

Cables
2 - Red

Keypad Location 1A-B

Bedroom 5, Left of Bath Door



Cables
2 - Red

Keypad Location 1A-C

BR 4/5 Bath, East Vanity



BR 4/5 Bath: East Vanity Light (1A-02)
 BR 4/5 Bath: Ceiling Lights (1A-09)
 BR 4/5 Bath: Toe-Kick Lighting (1A-03)
 BR 4/5 Bath: Heater (1A-13)

BR 4/5 Bath: Towel Warmer (1A-16)

Bedroom 4/5 Shower: Ceiling Lights (1A-07)
 Bedroom 4/5 Shower: Vent Fan (1A-11)

Cables
2 – Red

Keypad Location 1A-D

BR 4/5 Bath, West Vanity



BR 4/5 Bath: West Vanity Lights (1A-01)
 BR 4/5 Bath: Ceiling Lights (1A-09)
 BR 4/5 Bath: Toe-Kick Lighting (1A-03)
 BR 4/5 Bath: Heater (1A-13)

BR 4/5 Bath: Towel Warmer (1A-16)

Bedroom 4/5 Shower: Ceiling Lights (1A-07)
 Bedroom 4/5 Shower: Vent Fan (1A-11)

Cables
2 – Red

1A - Bedroom 5 & Bath

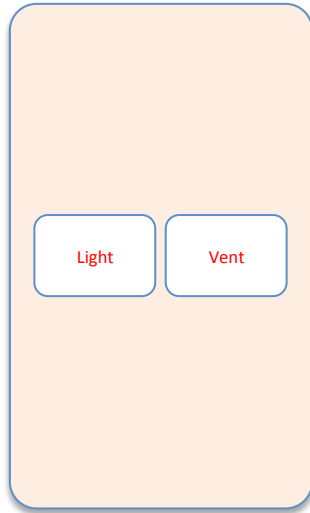
Lighting Keypads 2

Keypad Location 1A-E

Bedroom 4/5, Toilet

Keypad Location 1A-F

Bedroom 5, Outside Closet Door



Bedroom 4/5 Bath Toilet: Ceiling Lights (1A-08)
Bedroom 4/5 Bath Toilet: Vent Fan (1A-12)



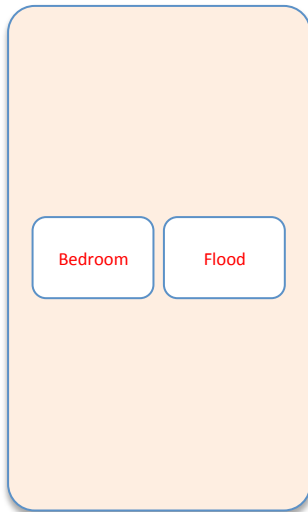
Bedroom 5 Closet: Ceiling Lights (1A-06)

Cables
1 - Red

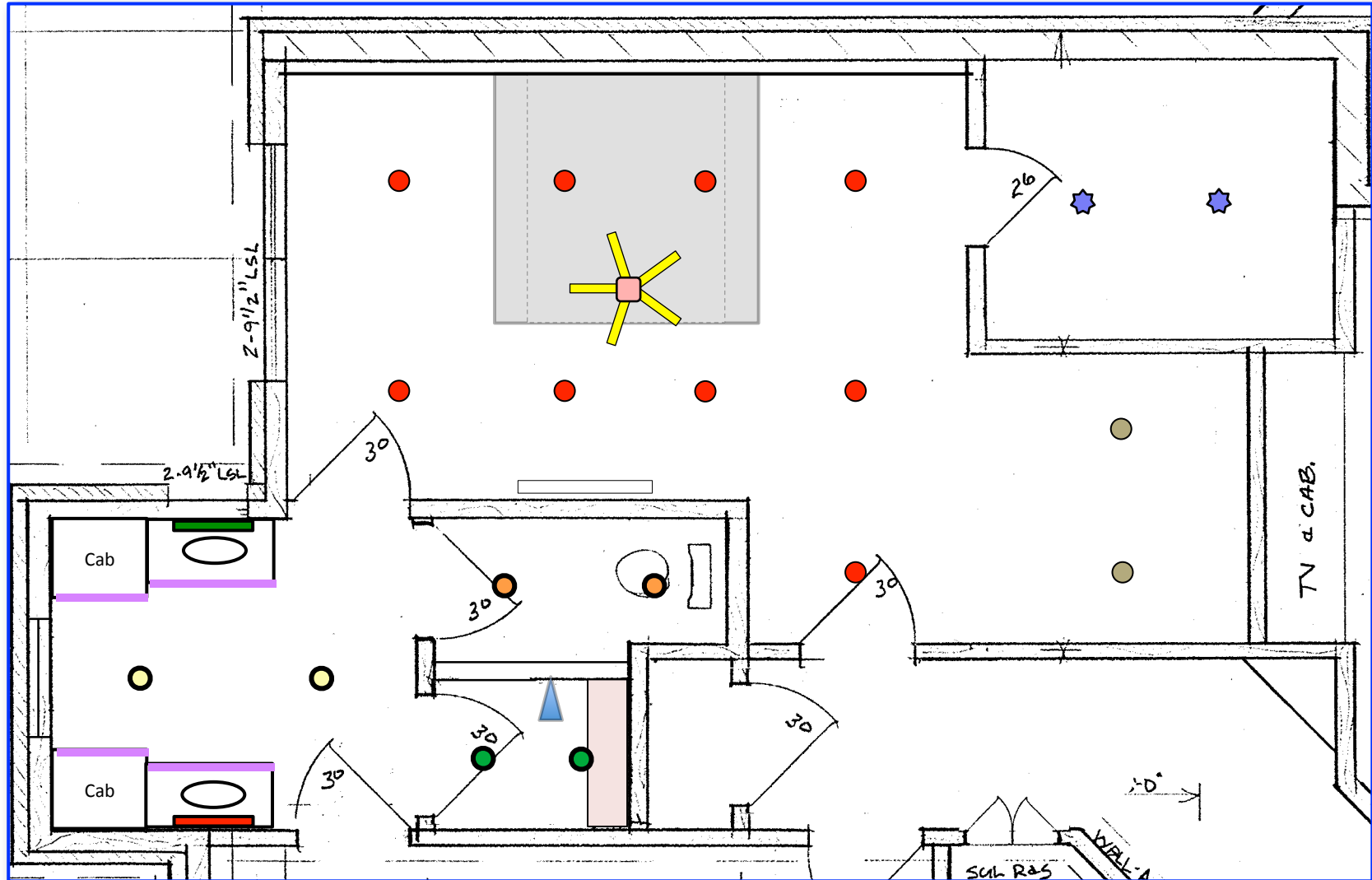
Cables
1 - Red

Keypad Location 1A-G

Bedroom 5, Left of South Window



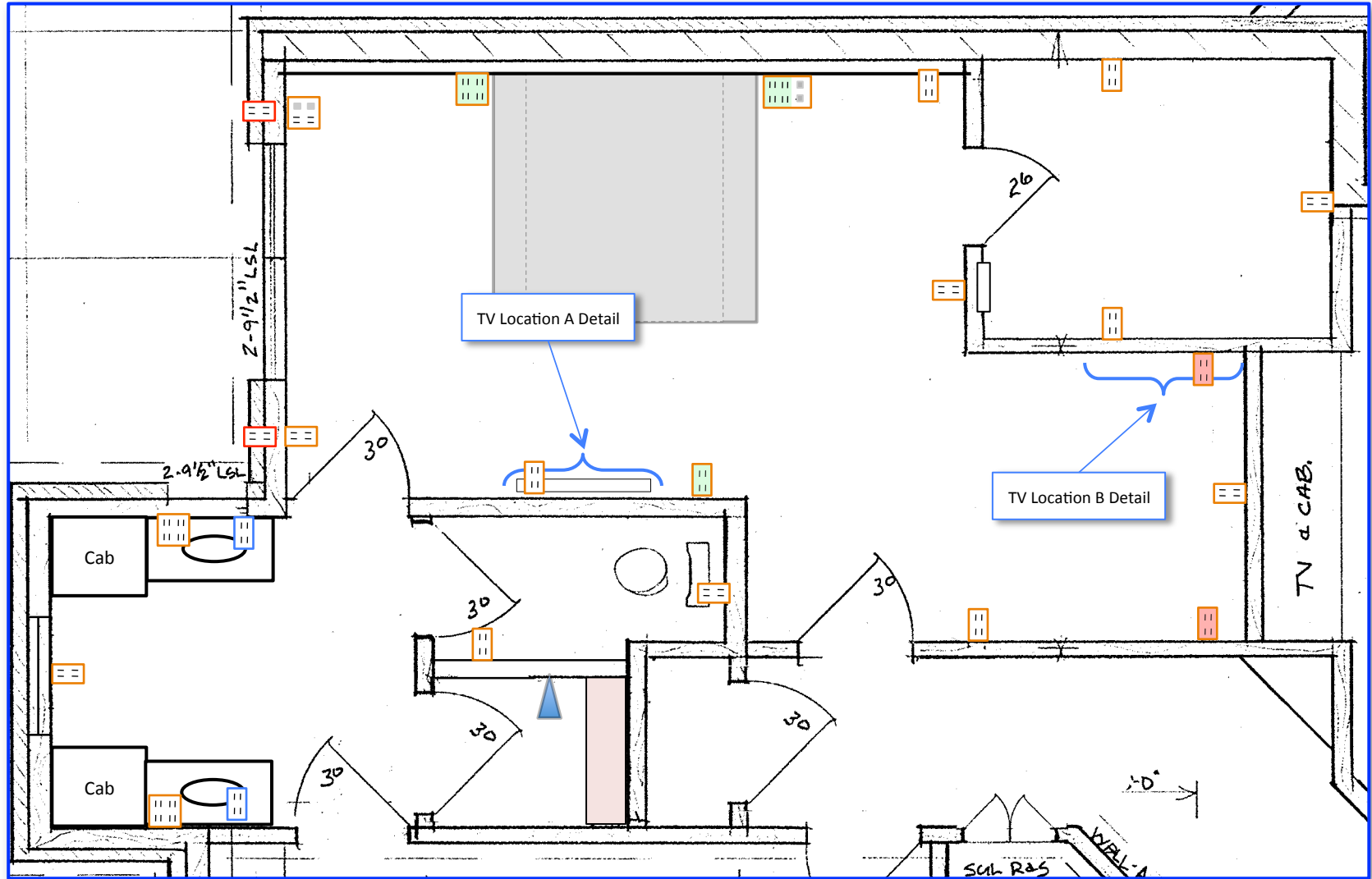
Cables
1 - Red












Lighting

- = Light Bar (1A-01)
- = Light Bar (1A-02)
- = Toe-Kick Lighting (1A-03) (~11 lineal ft)
- = 6" LED Recessed (1A-04)
- = 6" LED Recessed (1A-05)
- = 4" LED Recessed (1A-09)
- = 4" LED Recessed (1A-07)
- = 4" LED Recessed (1A-08)
- = Fan Light (1A-17)
- = Surface Fixture (1A-06)

Scale: 4' per inch



POWER

-  = 15A Duplex
-  = 15A Duplex (1/2 Switched)
-  = 15A Duplex / LAN / Phone
-  = 15A Duplex (Concealed)
-  = 15A Quad (1/4 Switched) / LAN / Phone
-  = 15A Quad
-  = 15A Quad (1/2 Switched)
-  = 15A Duplex / LAN / Phone (1/2 Switched)
-  = 15A Duplex (High)

Scale: 4' per inch

BR 5: Window Sash (L)
 Each Window: 1 NC Reed Switch
 (e1) Circuit: 1A-S01

BR 5: Window Sash (R)
 Each Window: 1 NC Reed Switch
 (e2) Circuit: 1A-S02

BR 5: Window Intrusion
 Circuit: 1A-S14

Cable: 1A-S01/02/14
 "Red/CN-Panel", 22-8

BR 5 Closet: Door
 1 NC Reed Switch
 Circuit: 1A-S04, Cable: 1A-S04
 Note: "Red/XL-Panel/1", 22-2

BR 4/5 Bath: Window Sash
 1 NC Reed Switch
 Circuit: 1A-S07

BR 4/5 Bath: Window Intrusion
 Circuit: 1A-S15

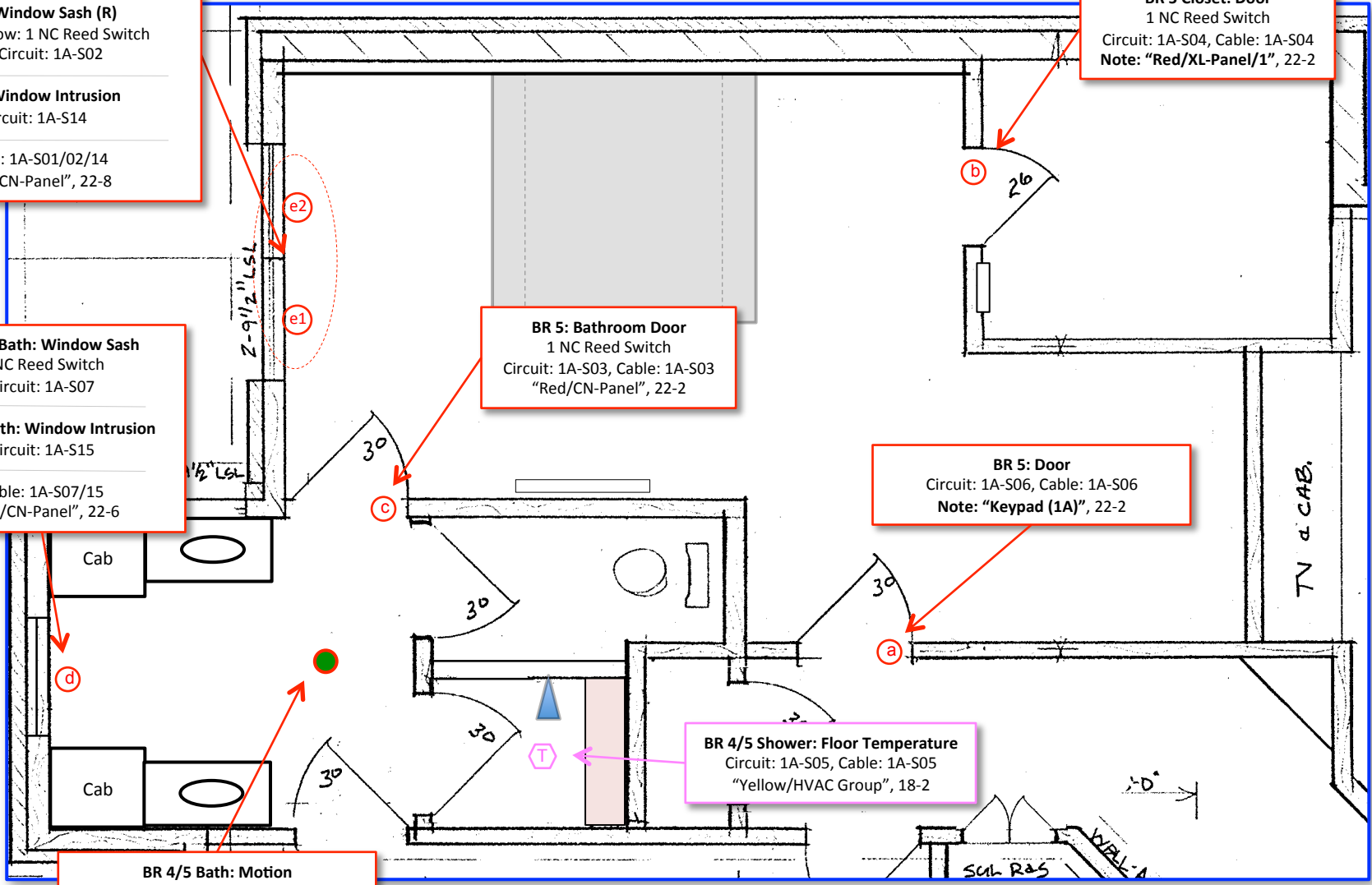
Cable: 1A-S07/15
 "Red/CN-Panel", 22-6

BR 5: Bathroom Door
 1 NC Reed Switch
 Circuit: 1A-S03, Cable: 1A-S03
 "Red/CN-Panel", 22-2

BR 5: Door
 Circuit: 1A-S06, Cable: 1A-S06
 Note: "Keypad (1A)", 22-2

BR 4/5 Shower: Floor Temperature
 Circuit: 1A-S05, Cable: 1A-S05
 "Yellow/HVAC Group", 18-2

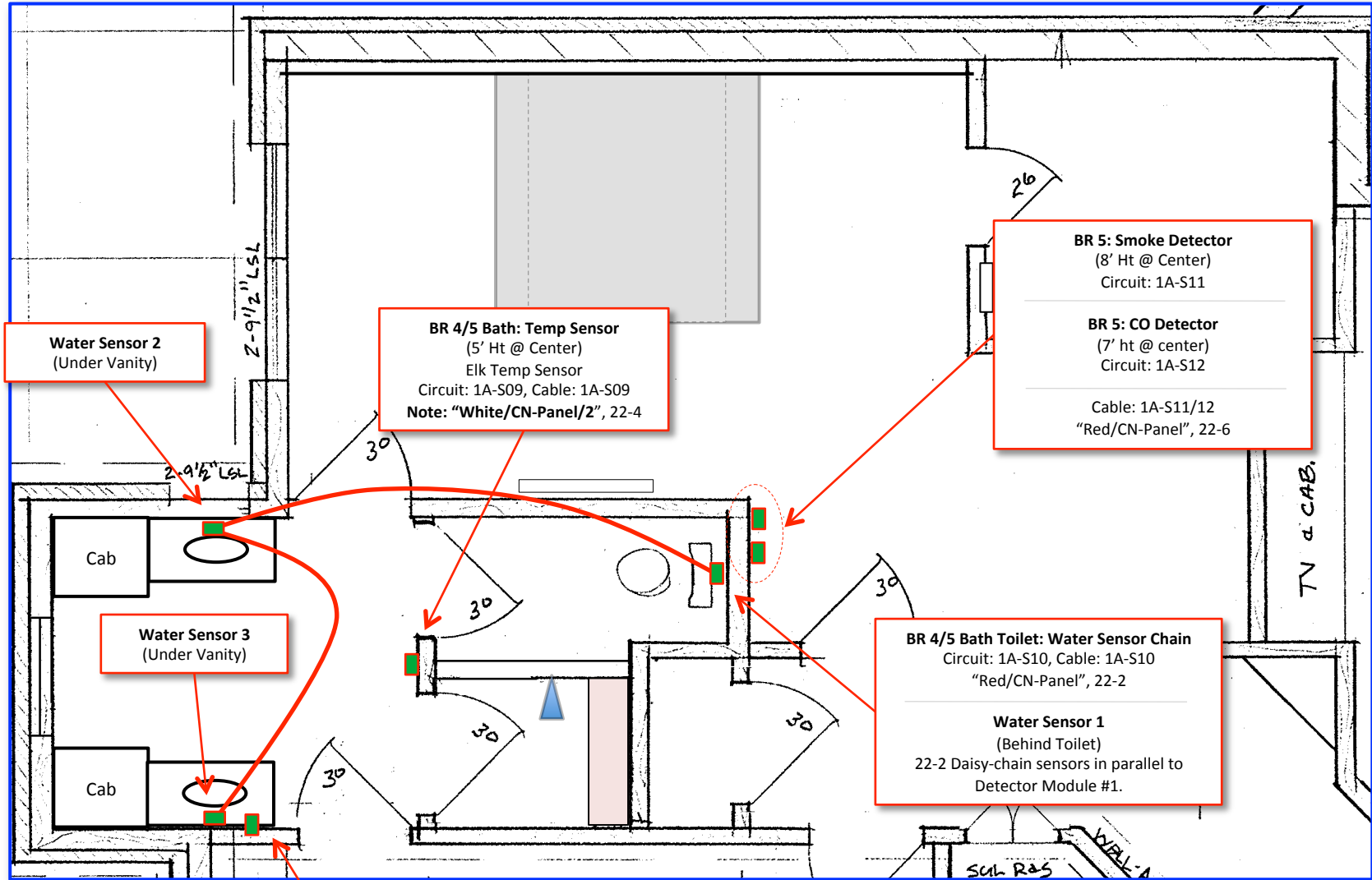
BR 4/5 Bath: Motion (Ceiling)
 Circuit: 1A-S08, Cable: 1A-S08
 "Red/CN-Panel", 22-4



(x) = NC Door/Window Sensor
 (Concealed Reed)

Scale: 4' per inch

Sensors 1



Water Sensor 2
(Under Vanity)

BR 4/5 Bath: Temp Sensor
(5' Ht @ Center)
Elk Temp Sensor
Circuit: 1A-S09, Cable: 1A-S09
Note: "White/CN-Panel/2", 22-4

BR 5: Smoke Detector
(8' Ht @ Center)
Circuit: 1A-S11

BR 5: CO Detector
(7' ht @ center)
Circuit: 1A-S12

Cable: 1A-S11/12
"Red/CN-Panel", 22-6

Water Sensor 3
(Under Vanity)

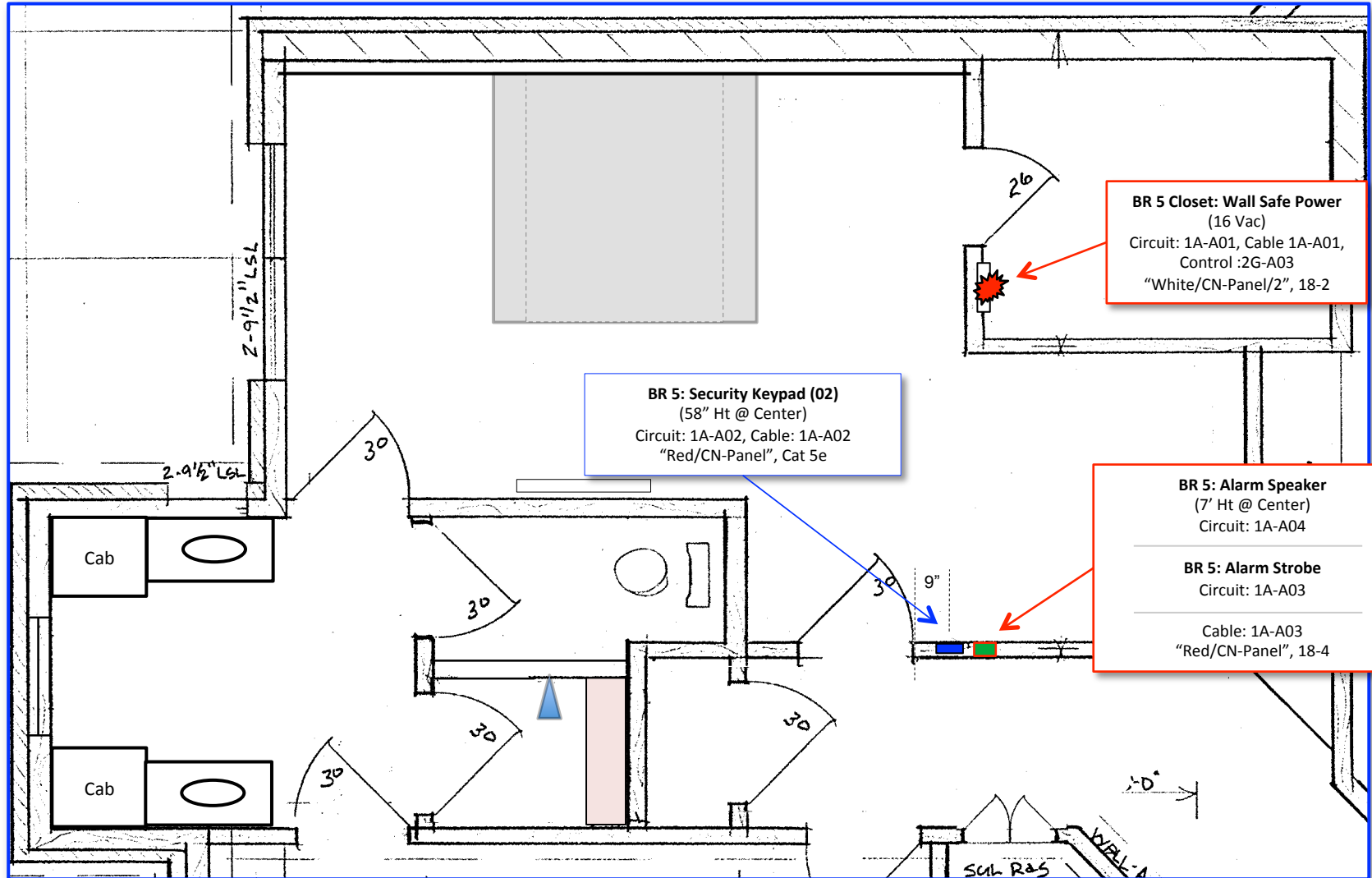
BR 4/5 Bath Toilet: Water Sensor Chain
Circuit: 1A-S10, Cable: 1A-S10
"Red/CN-Panel", 22-2

Water Sensor 1
(Behind Toilet)
22-2 Daisy-chain sensors in parallel to
Detector Module #1.

**BR 4/5 Bath: Hot Water Loop
Temperature**
RTD Sensor & Converter
Circuit: 1A-S13, Cable: 1A-S13
"White/CN-Panel/2", 22-2 (Shielded)

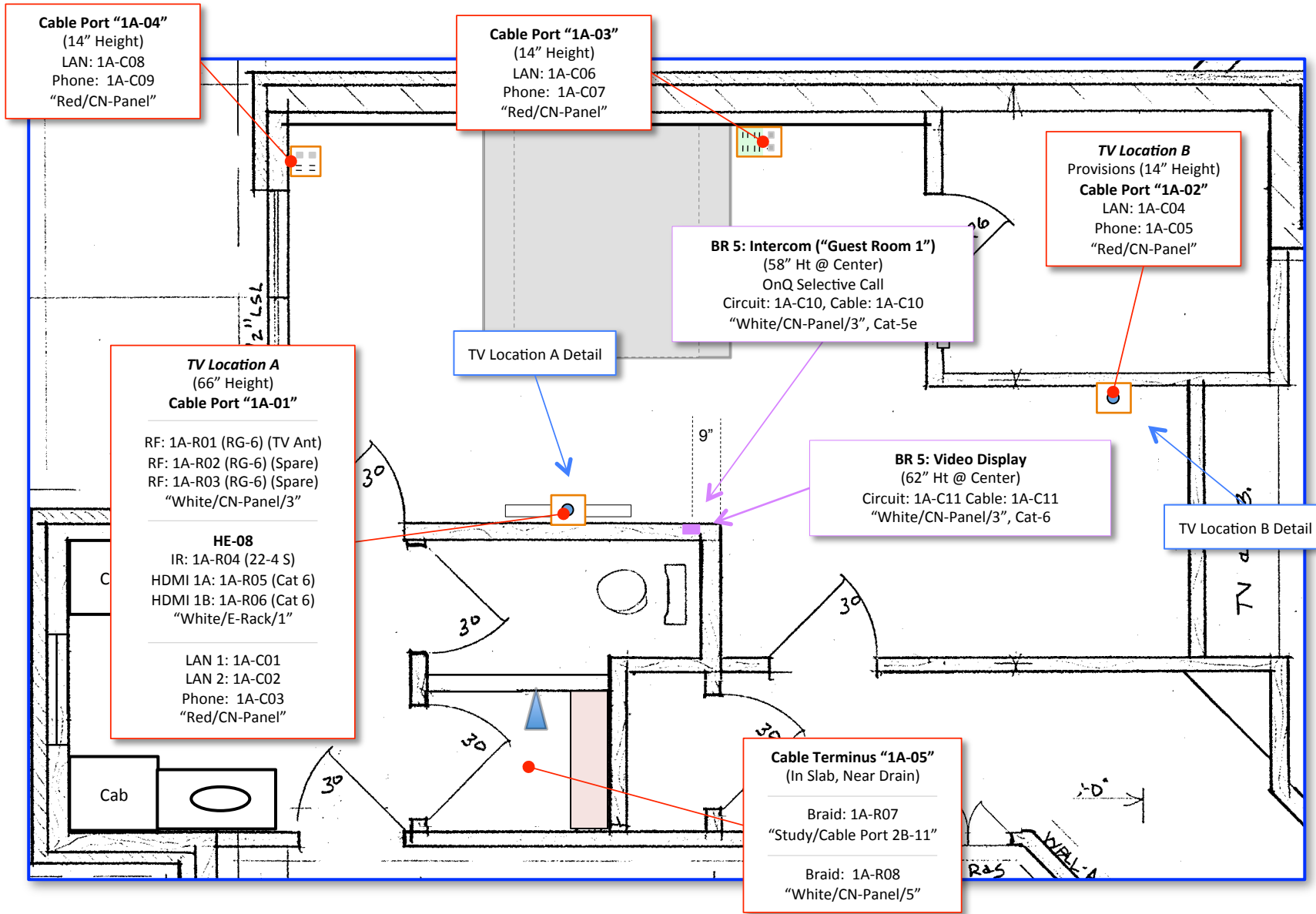
Scale: 4' per inch



Sensors 2



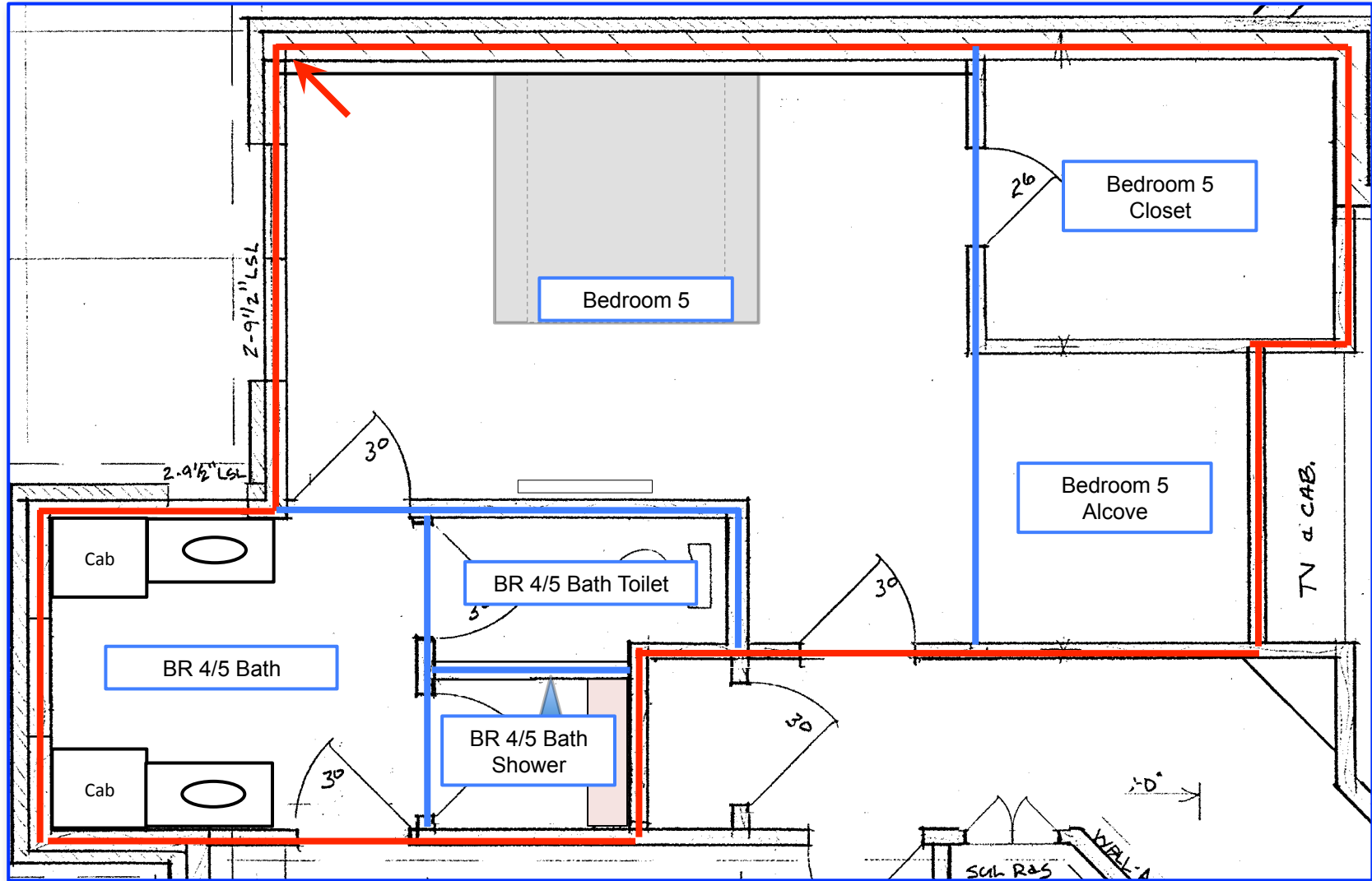
Automation Controls

Scale: 4' per inch




 = 15A Duplex / LAN / Phone
  = 15A Quad (¼ Switched)/ LAN / Phone

Scale: 4' per inch

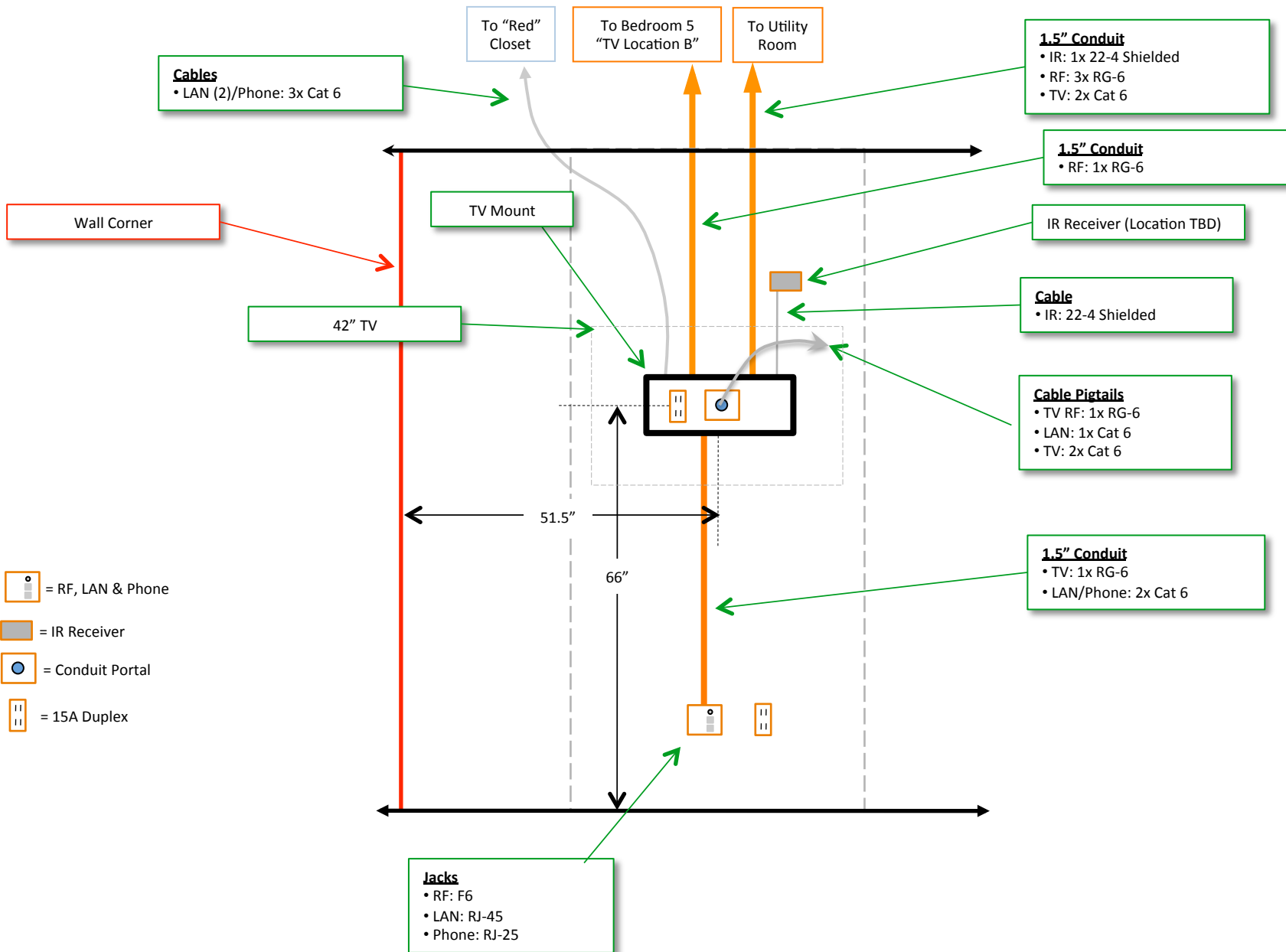


Region Overview

 = Region Boundary

 = Region Anchor Point (Corner)

Scale: 4' per inch



TV Location A Detail

Scale: 2' per inch

